

RESEARCH

Open Access

Low fat intake is associated with pathological manifestations and poor recovery in patients with hepatocellular carcinoma

Kazuki Yamada¹, Takeshi Suda^{1*}, Yuko S Komoro², Tsutomu Kanefuji¹, Tomoyuki Kubota¹, Toshiko Murayama², Hideaki Nakayama³ and Yutaka Aoyagi¹

Abstract

Background: This study aimed to clarify whether dietary deviation is associated with pathological manifestations in hepatocellular carcinoma (HCC) patients.

Methods: Dietary intake was estimated in 35 HCC cases before and after hospitalization by referencing digital camera images of each meal. Pathological conditions were evaluated in nitrogen balance, non-protein respiratory quotient (npRQ), neuropsychiatric testing and recovery speed from HCC treatment.

Results: On admission, nitrogen balance and npRQ were negative and less than 0.85, respectively. Five patients were judged to have suffered from minimal hepatic encephalopathy that tended to be associated with a lowered value of npRQ ($p = 0.082$). The energy from fat intake showed a tendency of positive correlation with npRQ ($p = 0.11$), and the patients with minimal hepatic encephalopathy took significantly fewer energy from fat ($p = 0.024$). The energy difference from fat between diets at home versus those in the hospital showed a significant positive correlation with npRQ change after admission ($p = 0.014$). The recovery speed from invasive treatments for HCC showed a significant negative correlation with npRQ alteration after admission ($p = 0.0002$, $r = -0.73$).

Conclusions: These results suggest the lower fat intake leads to deterioration of energy state in HCC patients, which associates with poor recovery from invasive treatments and various pathological manifestations.

Keywords: Hepatocellular carcinoma, Protein-energy malnutrition, Minimal hepatic encephalopathy, Non-protein respiratory quotient

Background

Hepatocellular carcinoma (HCC) is the third most common cause of cancer death in the world and accounts for over 500,000 deaths a year [1]. HCC is a unique type of cancer, which mostly arises in livers with chronic necroinflammatory damage due to various etiologies such as hepatitis C virus infection and non-alcoholic steatohepatitis [2]. Because long lasting necroinflammation leads to reductions of functional liver reserves, the patient's survival cannot be predicted from cancer stage alone, which is done in the other types of cancer. It has been reported that a system integrating both cancer stage

and functional liver reserve can accurately stratify patient survival rates [3]. For example, the Japan integrating scoring indicates that the functional liver reserve as assessed by the Child-Pugh scoring system has an impact on a patients' survival equivalent to anatomical cancer extension [4]. Thus, it is advisable to manage functional liver reserves in HCC patients in parallel with their cancer treatment in order to improve survival.

In terms of nutritional state, a characteristic feature of patients suffering from liver cirrhosis is protein-energy malnutrition (PEM) [5,6]. An insufficient energy intake of less than 30 kcal/kg has been reported to be associated with a poor prognosis in cases of liver cirrhosis [7]. Randomized prospective case control studies have revealed that nutritional intervention in order to support sufficient energy intake significantly improves patient

* Correspondence: suda@med.niigata-u.ac.jp

¹Division of Gastroenterology and Hepatology, Graduate School of Medical and Dental Sciences, Niigata University, Niigata 951-8122, Japan
Full list of author information is available at the end of the article

survival [8-10]. Unfortunately, it is common for cirrhotic patients to present with comorbidities such as hypermetabolism, inefficient digestion and anorexia [11], which counteract the beneficial effects of sufficient energy intake. The occurrence of hepatic encephalopathy due to an improper protein diet makes it even more difficult to practically maintain nutritional-energy balance during cirrhosis.

Along with energy intake, the body aims to maintain energy balance adopting various ways. In patients with anorexia nervosa, the physiological adaptation to malnutrition is expressed as the refeeding syndrome, when the extra energy is administered even with an appropriate amount to body size [12,13]. A daily consumption of a high-fat diet alters the homeostatic regulation [14-16]. Lean people consuming a high-fat diet are associated with increased energy expenditure at rest and a relatively higher fat oxidation to avoid weight gain [17]. These facts suggest that a nutritional intervention should be adjusted not statically but dynamically in association with personal daily life. In this report, we evaluated dietary intake both at home and in hospital among patients with HCC from the points of PEM, minimal hepatic encephalopathy (MHE) and recovery from cancer treatment, and show that dietary deviation is an important consideration when invasive treatments are planned. In addition, the impact of nutritional intervention is discussed for the optimal management of HCC.

Methods

Patients

Thirty-five consecutive cases suffering from HCC with various histories of liver disease were enrolled in this study (Table 1, Group 1). When hospital admission was

Table 1 Summary of patients' characteristics

Items	Group 1 (n = 35)	Group 2 (n = 20)
Age	68.5 ± 8.2	71.0 ± 8.2
Gender (male/female)	28/7	14/6
Body mass index	24.3 ± 3.2	24.6 ± 3.5
Background (HBV/HCV/Alcohol/ NASH/PBC/AIH)	12/14/6/3/1/0	4/11/3/1/0/1
Child-Pugh score (5/6/7/8/9)	20/7/6/0/2	11/5/3/0/1
TNM stage (I/II/III/IV)	18/9/3/5	6/5/4/5
Treatment (RFA/TACE/TOCE/HAIC/ Sorafenib/No)	8/6/3/11/1/6	4/6/3/7/0/0
BCAA supplementation (+/-)	21/14	11/9
PT-INR on admission	1.12 ± 0.09	1.09 ± 0.08

HBV hepatitis B virus, *HCV* hepatitis C virus, *NASH* nonalcoholic steatohepatitis, *PBC* primary biliary cirrhosis, *AIH* autoimmune hepatitis, *TNM* tumor-node-metastasis, *RFA* radiofrequency ablation, *TACE* transcatheter hepatic arterial chemoembolization, *TOCE* transcatheter oily chemoembolization, *HAIC* hepatic arterial infusion chemotherapy, *BCAA* branched-chain amino acids, *PT-INR* prothrombin time-international normalized ratio.

primarily to treat HCC, a digital camera and questionnaires were provided to record the diet at home several days before admission. A computer-aided neuropsychiatric test (NP test) and assessment of body composition based on a bioelectrical impedance analysis using InBody system (BIOSPACE, Tokyo, Japan) were performed upon admission. In addition, a dietician calculated energy intake based on Japanese dietary allowance according to home photo images, which were obtained at least three consecutive days prior to the admission both before and after each meal including snacks, and descriptions from the questionnaires. In patients without any special comorbidity such as diabetes mellitus, a regular hospital diet of 1800 kcal/day was served. Any nutritional support including branched-chain amino acids (BCAA) was kept as it was in the outpatient clinic. On the next day, day 1, nitrogen balance and non-protein respiratory quotient (npRQ) were evaluated. On day 4 after admission, one day before the application of invasive therapy, the NP test, nitrogen balance and npRQ were assessed again. The questionnaires and recording of digital photos before and after each meal were continued until day 4 in order to calculate actual energy intake for the hospital and non-hospital provided diet. This study was conducted according to the guidelines laid down in the Declaration of Helsinki and all procedures involving human subjects/patients were approved by the Niigata University Graduate School of Medical and Dental Sciences Human Research Committee. Written informed consent was obtained from all patients for publication of individual clinical details.

Neuropsychiatric test

When a patient received an abnormal value for the revised version of the Hasegawa dementia scale [18], he/she was excluded from this study. MHE was evaluated using a computer-aided quantitative NP test [19], which consisted of the eight following categorical tests: number connection tests A and B, a figure position test, a digit symbol test, a block design test, and reaction time tests A, B and C. Because the test results were affected by age, abnormality in each category was originally defined as values beyond the 90th percentile for an age-matched value over a 5-year interval, which was obtained from 542 healthy Japanese volunteers from 40 to 69-years old. Unfortunately, there were many patients who were 70-years old or older. To make an assessment for a patient over 69-years old, a linear regression curve was deduced that excluded reaction time tests, which were fit by second-order polynomial non-linear regression. Each regression analysis showed a significant correlation giving *r* squares of 0.95, 0.93, 0.77, 0.99, 0.91, 0.94, 0.93 and 0.82, respectively. Thus, in this study, value for each test was decided to be abnormal when it exceeded the 90th

percentile, which was calculated from the regression curve for the same age. Because many elderly patients do not react properly to the test due to a lack of experience using a computer, MHE was not diagnosed if the abnormal value appeared in one category but normal during the second evaluation. Instead, MHE was diagnosed when an abnormal value was reproducibly recorded even in one category or when abnormal values were obtained at least once in multiple categories.

Measurements of non-protein respiratory quotient and estimations of energy metabolism

Energy metabolism was analyzed using an indirect calorimeter, AERO MONITOR AE300S (Minato Medical Science Co., Ltd. Osaka, Japan), on day 1 and day 4 after overnight bed rest and fasting. Every five seconds, oxygen consumption (VO₂) and carbon dioxide production (VCO₂) were measured until steady-state values were obtained over two consecutive minutes. A steady state was defined by a variation between 5% and 10% in the average value for oxygen consumption and carbon dioxide production over 3 minutes. npRQ was calculated as an average of the following ratio: VCO₂/VO₂. Urine urea nitrogen (UUN) was measured by urease indophenol method in urine that was collected throughout the day without any intravenous infusion. Resting energy expenditure (REE) was calculated according to the following formula [20]: $((15.913 \times \text{VO}_2 + 5.207 \times \text{VCO}_2) \times 1.44 - 4.646 \times \text{TUN}) \times 0.239$. TUN (total urea nitrogen) was calculated in the urine, which was collected over 24 hours, as UUN + 4 if UUN exceeded 15 g/day; otherwise, TUN was calculated as UUN \times 1.17 + 0.7. Basal energy expenditure (BEE) was estimated using a Harris-Benedict equation, in which BEE was $66.5 + (13.75 \times \text{body weight in kg}) + (5.003 \times \text{body height in cm}) - (6.775 \times \text{age})$ for males and was $655.1 + (9.563 \times \text{body weight in kg}) + (1.850 \times \text{body height in cm}) - (4.676 \times \text{age})$ for females. The daily energy requirement was estimated from REE or BEE by multiplying by stress and activity coefficients of 1.1 and 1.3, respectively. The stress coefficient was selected between no stress; 1.0 and suffering from advanced cancer; 1.2, while the activity coefficient was decided between simple walking; 1.2 and light labour; 1.4, respectively. The protein and energy malnutrition was diagnosed in the case that npRQ was less than 0.85 [21] as well as nitrogen balance was negative.

Normalization of therapeutic invasiveness using prothrombin time

In order to standardize a recovery speed from HCC treatments based on therapeutic intensity, a reduction rate of prothrombin time (PT-INR) was used as an indicator for the intensity. Given nadir as a day showing minimum value of PT-INR after finishing an entire series of

treatment against HCC in one admission, a reduction rate of PT-INR was defined as a reduction percentage of PT-INR at nadir against PT-INR on admission. The formula calculating PT-INR reduction rate is as follows where PT-INRad and PT-INRnad indicate PT-INR on admission and at the nadir after a series of treatment, respectively.

$$\text{PT-INR reduction rate (\%)} = (\text{PT-INRad} - \text{PT-INRnad}) / \text{PT-INRad} \times 100$$

Then, a recovery speed from treatments for HCC was evaluated based on a length of hospital stay (day) after nadir that was normalized by dividing with the PT-INR reduction rate as follows.

$$\text{Recovery speed} = \text{hospital stay after PT-INRnad} / \text{PT-INR reduction rate} \times 100$$

Statistical analysis

Categorical data were compared between two groups using paired or unpaired t tests when groups were matched or unmatched, respectively. Correlation between npRQ and various factors were analyzed by calculating the Pearson correlation coefficient. All analyses were performed using GraphPad Prism 6 software (GraphPad Software, Inc. La Jolla, USA) except for a multivariate linear regression analysis, for which PASW statistics 17.0 (SPSS Inc., Chicago, USA) was used, and a two-sided P-value less than 0.05 was considered statistically significant.

Results

Patients hospitalized for hepatocellular carcinoma treatments frequently suffered from protein-energy malnutrition.

Patients who were admitted for active treatment of HCC had a home diet with an average of 1977 ± 513 (mean \pm SD) kcal/day leading to a negative nitrogen balance of -2.1 ± 4.5 g/dl (Figure 1A and 1B). Because among 35 cases, a case could not properly collect urine sample for a day on admission causing loss of UUN data, nitrogen balance and REE were evaluated for 34 cases. The energy malnutrition was also observed in the average npRQ value of 0.83 ± 0.061 on day 1, which was estimated to reflect the energy status at home (Figure 1C). npRQ on day 1 was not significantly correlated with BMI of 24.3 ± 3.2 kg/m² ($p = 0.35$) nor other representative body composition markers such as intra and extra cellular water, percent body fat or soft lean mass (data not shown). The average energy intake in the hospital was 1834 ± 290 kcal/day and tended to be lower than that at home ($p = 0.061$, Figure 1A). However, the negative nitrogen balance of -3.0 ± 2.8 g/dl was not significantly different ($p = 0.31$, Figure 1B), and the energy state was even significantly improved to a normal range of npRQ on day 4 at 0.86 ± 0.075 ($p = 0.0032$, Figure 1C). The energy requirements were calculated by multiplying 1.1 and 1.3 as stress and activity coefficients, respectively, to REE or BEE (Materials & Methods), which

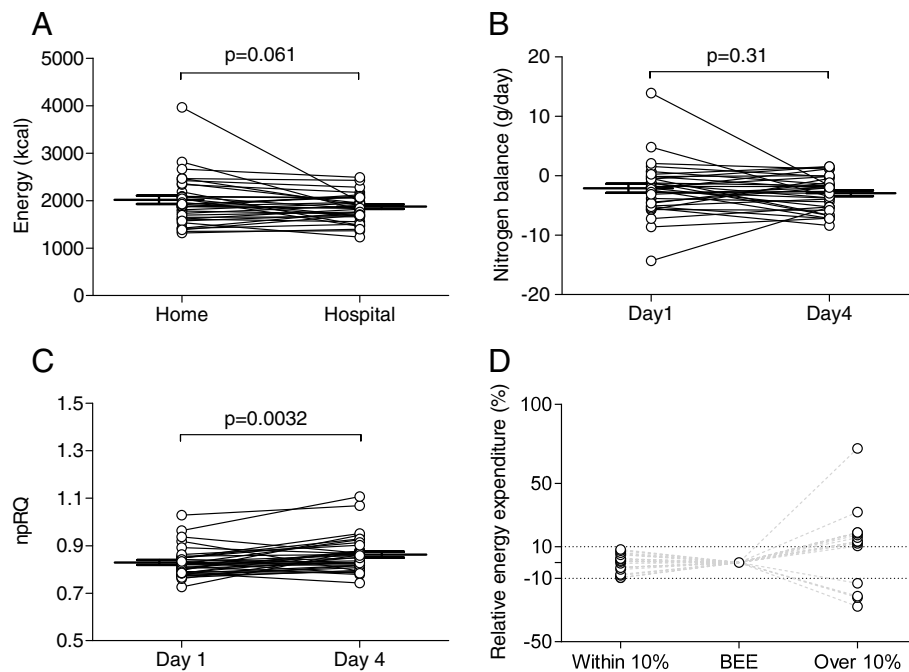


Figure 1 Energy intake and protein-energy malnutrition in patients with hepatocellular carcinoma. (A) The average energy intake of 35 HCC patients at home was 1977 ± 513 kcal/day (mean \pm SD) and tended to be higher than the 1834 ± 290 kcal/day in the hospital ($p = 0.061$). (B) Nitrogen balance was measured from a 24 hr specimen of urine and was -2.1 ± 4.5 g/dl and -3.0 ± 2.8 g/dl on days 1 and 4 after admission, respectively. There was no significant difference between these values ($p = 0.31$). (C) Non-protein respiratory quotient on day 1 was 0.83 ± 0.061 and was significantly lower than 0.86 ± 0.075 on day 4 ($p = 0.0032$). (D) Daily energy requirement was calculated based on resting energy expenditure (REE) or the basal energy expenditure (BEE) estimated from the Harris-Benedict equation. When stress and activity indices were set at 1.1 and 1.3, respectively, 15 out of 34 cases showed more than 10% difference between REE-based and BEE-based estimations.

resulted into 1940 ± 385 kcal or 1860 ± 281 kcal/day, respectively. Fifteen out of 34 cases showed more than 10% difference between REE-based and BEE-based estimations (Figure 1D). Although protein-energy malnutrition was observed on day 1, there was no significant difference between total energy intake at home, 1977 ± 513 kcal/day, and the energy requirement calculated from REE, 1940 ± 385 kcal/day, ($p = 0.60$). There were 21 cases that received the nutritional support of BCAA in 35 cases (Table 1, Group 1), and no significant difference was observed between cases with and without BCAA supplementation in nitrogen balance or npRQ day 1 ($p = 0.99$ and $p = 0.53$, respectively).

Minimal hepatic encephalopathy is associated with energy malnutrition

MHE was diagnosed in 5 cases on the basis of the computer-aided NP test. MHE-positive cases consisted of elderly patients with an average age of 77.2 ± 1.9 years, which was significantly older than the 67.0 ± 8.0 years for the cases that exhibited a negative NP test ($p = 0.0081$, Figure 2A). The energy state in MHE-positive cases was critically impaired on admission, which was indicated by the npRQ day 1 of 0.78 ± 0.027 . These patients tended to be malnourished in comparison to MHE-negative cases

with an npRQ of 0.84 ± 0.062 (Figure 2B, $p = 0.082$). In contrast, there were no significant differences between MHE-positive and -negative groups in regard to energy intake and body composition of skeletal muscle amount as shown in Figure 2C and 2D, respectively ($p = 0.51$ and $p = 0.18$, respectively).

Poor energy intake from fat is associated with minimal hepatic encephalopathy and starvation in patients with protein-energy malnutrition

The deviation of diet in relation to energy malnutrition and MHE was observed as a reduced energy intake from fat. The relative energy intake from fat at home tended to be correlated with npRQ day 1 as shown in Figure 3A ($p = 0.11$, $r = 0.28$). Moreover, the difference in energy from fat between home and hospital diets showed a significant positive correlation with npRQ change between day 1 and day 4 ($p = 0.014$, $r = 0.41$, Figure 3B).

In accordance with the relationship between MHE and npRQ as described above, MHE-positive cases relied on significantly fewer energy from fat at home with $18.9 \pm 3.8\%$ in comparison to $23.6 \pm 4.2\%$ in MHE-negative cases ($p = 0.024$, Figure 3C). Because MHE-positive cases consisted of significantly older people (70-years old or older) as shown in Figure 2A, the lower intake of energy

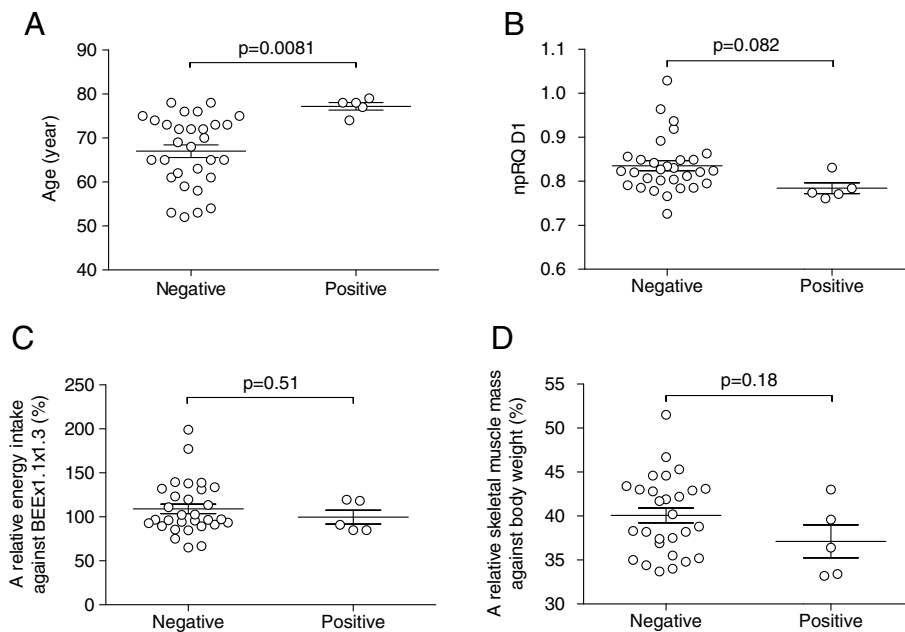


Figure 2 Relationship between minimal hepatic encephalopathy (MHE) and various clinicopathological factors. (A) Five patients who were diagnosed with MHE using a computer-aided neuropsychiatric test were significantly older in age (77.2 ± 1.9) than the MHE-negative cases (67.0 ± 8.0) ($p = 0.0081$). (B) npRQ on day 1 in MHE-positive and MHE-negative cases were 0.78 ± 0.027 and 0.84 ± 0.062 , respectively, and tended to be lower in MHE-positive cases ($p = 0.082$). (C) Relative energy intakes at home expressed as a percentage to basal energy expenditure multiplied by stress and activity indices of 1.1 and 1.3, respectively, were $109.0 \pm 30.0\%$ and $99.7 \pm 17.7\%$ in MHE-negative and -positive cases, and were not significantly different each other ($p = 0.51$). (D) Similarly, body compositions of skeletal muscle mass relative to body weight were $40.1 \pm 4.5\%$ and $37.1 \pm 4.2\%$ in MHE-negative and -positive cases, and were not significantly different each other ($p = 0.18$).

from fat in MHE-positive cases may be confounded by age differences between MHE-positive and MHE-negative cases. However, given that these patients were 70-years old or older, there was still a significant difference in terms of energy intake from fat. Specifically, an average energy intake from fat of $24.0 \pm 4.6\%$ for 14 MHE-negative cases was significantly higher than that for 5 MHE-positive cases ($p = 0.040$, Figure 3D). Moreover, the difference of energy intake from fat was compared between general population and our cohort using 2010 national surveillance data from Japan. In people with age of 70 or older, there was no significant difference of energy percentage from fat between MHE-negative patients in this study and general population ($22.9 \pm 10.5\%$ ($n = 562$), $p = 0.69$). There was a significant correlation of percent body fat neither with total energy intake nor relative energy intake from fat ($p = 0.28$ or $p = 0.43$, respectively).

Deterioration of npRQ over hospitalization is associated with poor recovery from invasive therapies for hepatocellular carcinoma

The effects of transition from home to hospital diets on energy malnutrition and recovery from invasive therapies were evaluated. Because these patients were treated using various therapeutic options such as transcatheter hepatic arterial chemoembolization or radiofrequency ablation,

the invasiveness affected each case differently. To compare the recovery speed among cases, the invasiveness has to be standardized. For this purpose, we employed PT-INR reduction rate (Materials and Methods).

If no treatment was conducted or PT-INR was not reduced after treatments, those cases were excluded from the analysis in order to specifically examine the deterioration-recovery sequence. Furthermore, cases that showed the minimal PT-INR value amid a multiple treatment course were also excluded. Because only 11 cases were qualified for a further analysis from the original 35 cases, additional 9 cases were subjected to analysis of the PT-INR reduction rate and npRQ day 1 and day 4. Finally, a total of 20 cases (Table 1, Group 2) were subjected to further analyses. After these therapies, PT-INR was reduced $5.8 \pm 3.8\%$ on its nadir of 5.8 ± 5.1 days after each treatment.

There was no significant correlation between the PT-INR reduction rate and the difference in npRQ between day 1 and day 4 ($p = 0.065$, $r = 0.42$, Figure 4A), thereby suggesting that therapeutic option was not selected on the basis of the change in energy state after hospitalization. On the other hand, when the length of hospital stay after the nadir of PT-INR was normalized with the PT-INR reduction rate and used as an indicator of the recovery speed after invasive treatments, the recovery speed

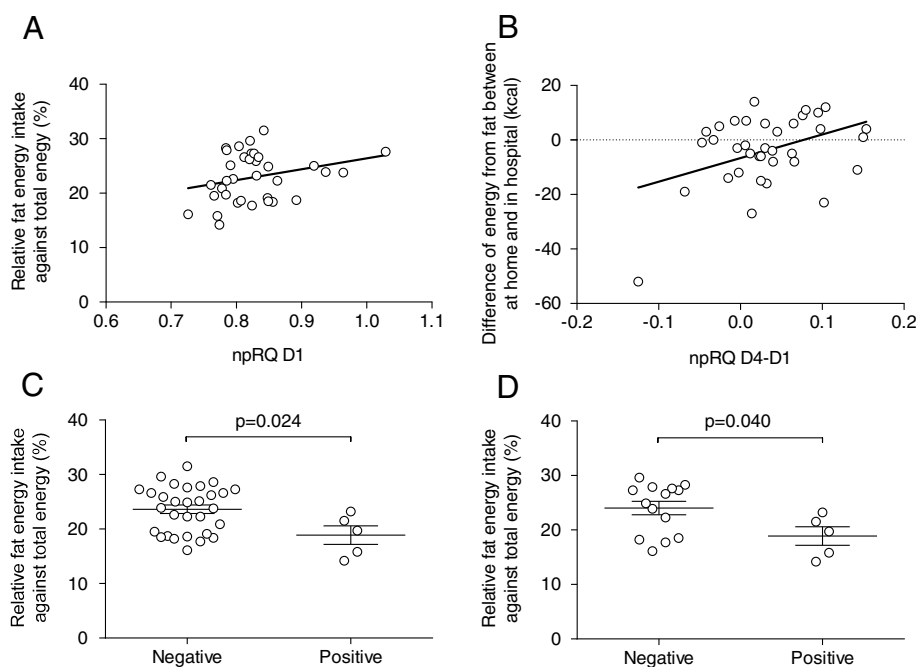


Figure 3 Effects of energy intake from fat on non-protein respiratory quotient and minimal hepatic encephalopathy. (A) There was a tendency of correlation between energy intake from fat relative to total energy intake at home and non-protein respiratory quotient (npRQ) day 1 ($p = 0.11$, $r = 0.28$). (B) The difference in energy intake from fat between at home and in hospital diets was significantly correlated with the alteration of npRQ day 1 and day 4 ($p = 0.014$, $r = 0.41$). (C) and (D). The relative energy intake from fat to total energy intake was $18.9 \pm 3.8\%$ in minimal hepatic encephalopathy (MHE)-positive cases and was significantly lower than $23.6 \pm 4.2\%$ in MHE-negative cases ($p = 0.024$). Even for the cases that were limited to 70-years old or older people, the energy intake from fat was $24.0 \pm 4.6\%$ in MHE-negative cases, which was significantly higher than MHE-positive cases ($p = 0.040$).

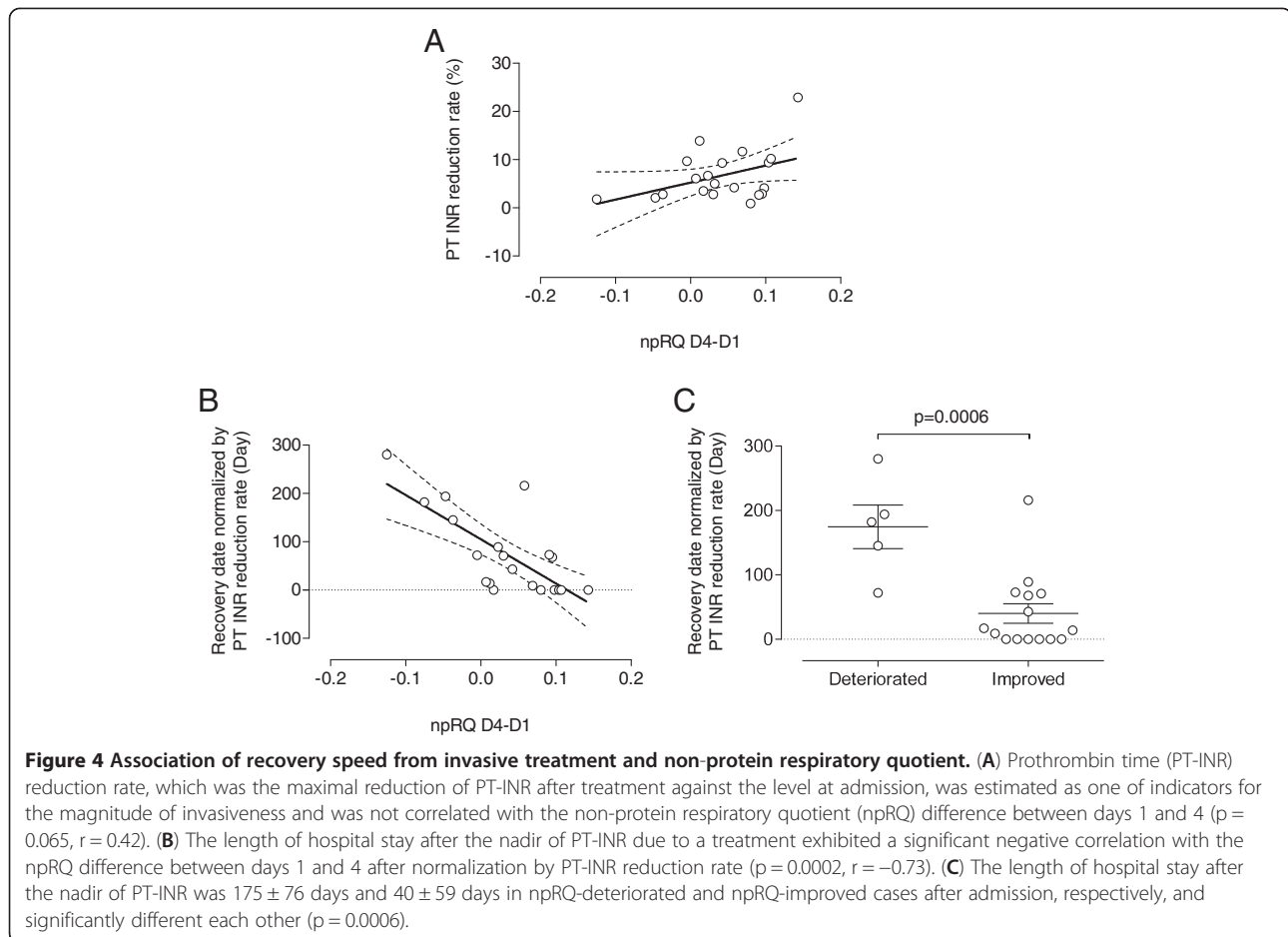
showed a significant negative correlation with the difference in npRQ between day 1 and day 4 ($p = 0.0002$, $r = -0.73$, Figure 4B). Consistently, the length of hospital stay after the nadir of PT-INR was significantly longer in 5 cases with deteriorated npRQ after admission comparing with that in 15 cases, in which npRQ was improved after admission (175 ± 76 days vs 40 ± 59 days, respectively, $p = 0.0006$, Figure 4C).

In order to confirm that npRQ difference between day 1 and day 4 is a significant determinant for the length of hospital stay after treatment of HCC, a multiple linear regression analysis was performed by employing the recovery speed as a dependent variable. Independent variables were consisted of 8 factors; age, gender, background liver diseases, TNM stage, Child-Pugh score, body mass index, BCAA supplementation, and npRQ difference. In the results, npRQ difference was selected as an only significant explanatory ($p = 0.001$, Table 2).

Discussion

Several lines of evidence strongly indicate that a functional hepatic reserve possesses similar impacts on the survival of HCC cases with anatomical cancer extension [3,4,22-24]. On the other hand, several randomized prospective case control studies have revealed that active

nutritional intervention significantly improves the prognosis in patients with liver cirrhosis [8-10]. Taken together with the evidence that energy intake lower than 30 kcal/kg leads to a poor prognosis in cirrhotic patients [7], it is reasonable to assume that a strategy to preserve functional hepatic reserves should be incorporated into a treatment scheme for HCC. In this report, we first evaluated protein-energy status in patients who were facing active interventional treatments for HCC. In these cases, PEM was clearly present on admission as a negative nitrogen balance and an npRQ less than 0.85 in association with MHE that was diagnosed in 5 out of 35 cases. These results strongly suggest that nutritional intervention should be started before hospitalization in patients with HCC. In terms of nutritional support, BCAA supplementation was reported to elongate event-free survival by improving PEM in cirrhotic patients [25], while its efficacy was equivocal in cases receiving radiofrequency ablation as the form of HCC treatment [26]. Although the nitrogen balance and npRQ were not significantly different between cases with and without BCAA supplementation in this study, the limited number of cases does not provide a conclusive result. The significance of BCAA supplementation under active treatments of HCC should be further evaluated in a larger cohort.



It was reported that BEE underestimates energy requirements in patients with liver cirrhosis, which leads to a hypermetabolic state [27]. Consistently, the BEE-based energy requirement calculated from the Harris-Benedict equation was different from the REE-based estimation more than 10% in more than 44% cases in

Table 2 Result of multivariate linear regression analysis for recovery speed

Variables	Unstandardized coefficients	Significance
(Constant)	-27.102	0.908
Age	1.612	0.557
Gender	-33.052	0.368
Background liver disease	-34.672	0.223
TNM Stage	6.114	0.663
Child-Pugh score	-23.669	0.192
Body mass index	7.926	0.174
BCAA supplementation	46.270	0.194
npRQ Day4 - Day1	-1161.490	0.001

TNM tumor-node-metastasis, BCAA branched-chain amino acids, npRQ non-protein respiratory quotient, Day1, the first morning after admission, Day4, the fourth morning after admission.

this study. On the other hand, the total energy intake at home was not significantly different from the daily energy requirement, which was estimated from REE by multiplying 1.1 and 1.3 as the stress and activity coefficients, respectively. Although energy equivalents are considered in the REE-based calculation, these PEM suffering patients suggest that liver cirrhosis affected energy state not only by inducing hypermetabolism but also by hampering the absorption and/or efficient usage of nutrients. Furthermore, the increase of npRQ above 0.85 after admission even with consumption of less energy suggests that it is practically difficult to select appropriate activity and stress coefficients. Taken together, it is strongly recommended that the protein-energy state should be used to define an appropriate daily energy intake in cirrhotic patients using indicators such as npRQ.

The computer-aided NP test is one of the few quantitative approaches for the diagnosis of MHE that were recommended in the guidelines provided by the World Congress of Gastroenterology-commissioned Working Party [28] due to their high specificity for diagnosing hepatic encephalopathy [29]. Currently, however, the diagnosis and clinical significance of MHE have not been

well defined [30]. While abnormal values at least in two tests among eight subsets were reported to be required achieving 80% of sensitivity [31], the same setting were also employed for diagnostic criteria in NP test consisting of four subsets instead of eight [32]. Another problem for NP test is age dependency [19]. There are no available control data for patients over the age of 69. Hence, it may be difficult to distinguish an early stage of dementia from MHE. In addition, there is a concern that these results may be affected by unfamiliarity with using a computer device, especially when elderly patients are the subjects. In this study, the 90th percentile for normal controls was estimated in each test from a regression line deduced from the values of controls between ages 40 to 69. A high Pearson's coefficient value for this regression line demonstrated the goodness of fit for all eight categories. Patients who were diagnosed with dementia were excluded from the study on the basis of a revised Hasegawa dementia scale [18]. Although senile decay in reaction time and/or cognition may not be completely excluded from our MHE diagnostic criteria, the lower values of npRQ in all 5 MHE-positive patients strongly suggested that MHE diagnosed by our criteria was associated with functional hepatic reserve. Easy and reliable diagnostic criteria for MHE should be further explored through extensive studies using a larger cohort to prove the clinical significance of MHE in association with the energy malnutrition.

This study suggested that an insufficient fat source impaired the recovery from invasive treatments for HCC in cirrhotic patients. An indicator of energy state, npRQ, was significantly changed after admission in association with the energy difference for fat consumed between home and the hospital. Consistent with the association between MHE cases and lower npRQ, the relative energy from fat was significantly lower in the cases that were diagnosed with MHE. Taken together, it is suggested that energy state should be improved before invasive treatments to promote a rapid recovery, and specifically, energy from fat should be provided at a dose recommended for the regular dietary allowance, which is between 20% to 30% of total energy intake [33,34]. In terms of normalization of therapeutic invasiveness, PT-INR was employed in this study. Although serum concentrations of NH_3 and total bilirubin were tested for this purpose, these values were prerequisite altered due to extrahepatic circumstances such as constipation or constitutive jaundice. Because a single criterion of PT-INR was employed, the relationship between fat intake and recovery from HCC treatments should be confirmed using other measures in the future.

Although the limited case numbers in this study may have resulted in an inadequate assessment of the biological variability, as neither npRQ nor MHE was

associated with body compositions such as BMI, extra cellular water, percent body fat, soft lean mass, or skeletal muscle amount, it is assumed that orally taken fat was directly consumed as an energy source. Nonesterified fatty acid (NEFA) suppresses gluconeogenesis in the liver through insulin secretion. At the same time, however, NEFA desensitizes the liver to insulin *via* insulin receptor substrates, which surpass insulin induction and lead to net elevation of gluconeogenesis [35-40]. Furthermore, fat from diet is absorbed in the form of chylomicrons and is taken up by hepatocytes as a remnant after digestion at the capillary endothelium by lipoprotein lipase [41], promoting gluconeogenesis as a source of energy and substrates such as acetyl-CoA, NADH and ATP. Through β -oxidation processes, acetyl-CoA is subjected to not only gluconeogenesis but also the generation of ketone bodies, which are major energy sources in the brain [42]. In a whole body, npRQ could increase as long as peripheral tissues have glucose and/or ketones to oxidize even under the situation where npRQ decreased in the liver due to gluconeogenesis and ketogenesis [43]. Under PEM, it is teleological for the liver that NEFA uptake is increased in association with up-regulation of gluconeogenesis and ketogenesis [44]. Recently, it was reported that p38 mitogen-activated protein kinase plays a crucial role in the activation of gluconeogenic genes by NEFA [45]. Although the results presented here should be confirmed by a large scale study, our notion is in line with the guideline from the European Society for Clinical Nutrition and Metabolism, which recommends 40% to 50% of non-protein energy requirements (more than 30% of total energy requirements) should be provided by lipid in parenteral nutrition in patients with liver diseases [46]. An appropriate amount of fat intake may have the potential to improve PEM and MHE under the condition such as cirrhosis, in which sugar and protein metabolisms cannot work properly [47,48].

Conclusions

This study suggested that PEM is a common feature in patients with HCC, and energy state can quickly change based on dietary deviation, which affects various clinical manifestations and recovery from invasive treatments. These findings strongly suggest that nutritional intervention especially for fat intake should be involved in the HCC treatment scheme both at home and in the hospital. Because a hypermetabolic state and inappropriate nutritional usage may hamper the calculation of an exact energy requirement in cirrhotic patients, nutritional supports should be conducted based on a nutritional assessment, which includes nitrogen balance, npRQ and MHE.

Abbreviations

BCAA: Branched-chain amino acids; BEE: Basal energy expenditure; HCC: Hepatocellular carcinoma; NEFA: Nonesterified fatty acid; npRQ:

Non-protein respiratory quotient; NP- test: Neuropsychiatric test; PEM: Protein-energy malnutrition; PT-INR: Prothrombin time; REE: Resting energy expenditure; TUN: Total urea nitrogen; UUN: Urine urea nitrogen; VCO₂: Carbon dioxide production; VO₂: Oxygen consumption.

Competing interests

All authors declare that they have no competing interest to disclose.

Authors' contributions

TS designed the research, analyzed data and wrote the manuscript. TK, TK, KY, YSK performed nprQ, MHE, body composition and dietary intake analyses. HN and TM evaluated the results of nprQ and nutritional aspect, respectively, and made disciplinary advice. YA made critical revision of the manuscript for important intellectual content. All authors read and approved the final manuscript.

Acknowledgements

There is no conflict of interest to declare in association with this manuscript. This study was supported by a grant from the Niigata University Medical and Dental Hospital (Clinical research support project/2012) to Takeshi Suda.

Author details

¹Division of Gastroenterology and Hepatology, Graduate School of Medical and Dental Sciences, Niigata University, Niigata 951-8122, Japan. ²Nutrition Control Center, Niigata University Medical and Dental Hospital, Niigata 951-8520, Japan. ³Division of Pneumology, Niigata University Medical and Dental Hospital, Niigata 951-8520, Japan.

Received: 24 December 2012 Accepted: 4 June 2013

Published: 8 June 2013

References

- Bosch FX, Ribes J, Diaz M, Cleries R: **Primary liver cancer: worldwide incidence and trends.** *Gastroenterology* 2004, **127**:S5–S16.
- Sherman M: **Hepatocellular carcinoma: epidemiology, surveillance, and diagnosis.** *Semin Liver Dis* 2010, **30**:3–16.
- The Cancer of the Liver Italian Program (CLIP) investigators: **A new prognostic system for hepatocellular carcinoma: a retrospective study of 435 patients.** *Hepatology* 1998, **28**:751–755.
- Kudo M, Chung H, Osaki Y: **Prognostic staging system for hepatocellular carcinoma (CLIP score): its value and limitations, and a proposal for a new staging system, the Japan Integrated Staging Score (JIS score).** *J Gastroenterol* 2003, **38**:207–215.
- Lautz HU, Selberg O, Korber J, Burger M, Muller MJ: **Protein-calorie malnutrition in liver cirrhosis.** *Clin Invest* 1992, **70**:478–486.
- Moriwaki H: **Protein-energy malnutrition in liver cirrhosis.** *J Gastroenterol* 2002, **37**:578–579.
- Campillo B, Richardet JP, Scherman E, Bories PN: **Evaluation of nutritional practice in hospitalized cirrhotic patients: results of a prospective study.** *Nutrition* 2003, **19**:515–521.
- Cabre E, Gonzalez Huix F, Abad Lacruz A, Esteve M, Acero D, Fernandez Banares F, Xiol X, Gassull MA: **Effect of total enteral nutrition on the short-term outcome of severely malnourished cirrhotics. A randomized controlled trial.** *Gastroenterology* 1990, **98**:715–720.
- Kearns PJ, Young H, Garcia G, Blaschke T, O'Hanlon G, Rinki M, Sucher K, Gregory P: **Accelerated improvement of alcoholic liver disease with enteral nutrition.** *Gastroenterology* 1992, **102**:200–205.
- de Ledinghen V, Beau P, Mannant PR, Borderie C, Ripault MP, Silvain C, Beauchant M: **Early feeding or enteral nutrition in patients with cirrhosis after bleeding from esophageal varices? A randomized controlled study.** *Dig Dis Sci* 1997, **42**:536–541.
- Muller MJ: **Malnutrition and hypermetabolism in patients with liver cirrhosis.** *Am J Clin Nutr* 2007, **85**:1167–1168.
- Kohn MR, Madden S, Clarke SD: **Refeeding in anorexia nervosa: increased safety and efficiency through understanding the pathophysiology of protein calorie malnutrition.** *Curr Opin Pediatr* 2011, **23**:390–394.
- Mehanna H, Nankivell PC, Moledina J, Travis J: **Refeeding syndrome—awareness, prevention and management.** *Head Neck Oncol* 2009, **1**:4.
- Savastano DM, Covasa M: **Adaptation to a high-fat diet leads to hyperphagia and diminished sensitivity to cholecystokinin in rats.** *J Nutr* 2005, **135**:1953–1959.
- Legendre A, Papakonstantinou E, Roy MC, Richard D, Harris RB: **Differences in response to corticotropin-releasing factor after short- and long-term consumption of a high-fat diet.** *Am J Physiol Regul Integr Comp Physiol* 2007, **293**:R1076–1085.
- Blundell JE, Cooling J, King NA: **Differences in postprandial responses to fat and carbohydrate loads in habitual high and low fat consumers (phenotypes).** *Br J Nutr* 2002, **88**:125–132.
- Woods SC, D'Alessio DA, Tso P, Rushing PA, Clegg DJ, Benoit SC, Gotoh K, Liu M, Seeley RJ: **Consumption of a high-fat diet alters the homeostatic regulation of energy balance.** *Physiol Behav* 2004, **83**:573–578.
- Kim KW, Lee DY, Jhoo JH, Youn JC, Suh YJ, Jun YH, Seo EH, Woo JI: **Diagnostic accuracy of mini-mental status examination and revised hasegawa dementia scale for Alzheimer's disease.** *Dement Geriatr Cogn Disord* 2005, **19**:324–330.
- Kato A, Kato M, Ishii H, Ichimiya Y, Suzuki K, Kawasaki H, Yamamoto SI, Kumashiro R, Yamamoto K, Kawamura N, Hayashi N, Matsuzaki S, Terano A, Okita K, Watanabe A: **Development of quantitative neuropsychological tests for diagnosis of subclinical hepatic encephalopathy in liver cirrhosis patients and establishment of diagnostic criteria-multicenter collaborative study in Japanese.** *Hepatol Res* 2004, **30**:71–78.
- Eliä M, Livesey G: **Energy expenditure and fuel selection in biological systems: the theory and practice of calculations based on indirect calorimetry and tracer methods.** *World Rev Nutr Diet* 1992, **70**:68–131.
- Tajika M, Kato M, Mohri H, Miwa Y, Kato T, Ohnishi H, Moriwaki H: **Prognostic value of energy metabolism in patients with viral liver cirrhosis.** *Nutrition* 2002, **18**:229–234.
- Okuda K, Ohtsuki T, Obata H, Tomimatsu M, Okazaki N, Hasegawa H, Nakajima Y, Ohnishi K: **Natural history of hepatocellular carcinoma and prognosis in relation to treatment. Study of 850 patients.** *Cancer* 1985, **56**:918–928.
- Llovet JM, Fuster J, Bruix J: **The Barcelona approach: diagnosis, staging, and treatment of hepatocellular carcinoma.** *Liver Transpl* 2004, **10**:S115–120.
- Tateishi R, Yoshida H, Shiina S, Imamura H, Hasegawa K, Teratani T, Obi S, Sato S, Koike Y, Fujishima T, Makuuchi M, Omata M: **Proposal of a new prognostic model for hepatocellular carcinoma: an analysis of 403 patients.** *Gut* 2005, **54**:419–425.
- Moriwaki H, Shiraki M, Fukushima H, Shimizu M, Iwasa J, Naiki T, Nagaki M: **Long-term outcome of branched-chain amino acid treatment in patients with liver cirrhosis.** *Hepatol Res* 2008, **38**:S102–S106.
- Kuroda H, Ushio A, Miyamoto Y, Sawara K, Oikawa K, Kasai K, Endo R, Takikawa Y, Kato A, Suzuki K: **Effects of branched-chain amino acid-enriched nutrient for patients with hepatocellular carcinoma following radiofrequency ablation: a one-year prospective trial.** *J Gastroenterol Hepatol* 2010, **25**:1550–1555.
- Madden AM, Morgan MY: **Resting energy expenditure should be measured in patients with cirrhosis, not predicted.** *Hepatology* 1999, **30**:P655–664.
- Ferenci P, Lockwood A, Mullen K, Tarter R, Weissenborn K, Blei AT: **Hepatic encephalopathy—definition, nomenclature, diagnosis, and quantification: final report of the working party at the 11th World Congresses of Gastroenterology, Vienna, 1998.** *Hepatology* 2002, **35**:716–721.
- Weissenborn K, Ennen JC, Schomerus H, Ruckert N, Hecker H: **Neuropsychological characterization of hepatic encephalopathy.** *J Hepatol* 2001, **34**:768–773.
- Stewart CA, Smith GE: **Minimal hepatic encephalopathy.** *Nat Clin Pract Gastroenterol Hepatol* 2007, **4**:677–685.
- Michitaka K, Tokumoto Y, Uesugi K, Kisaka Y, Hirooka M, Konishi I, Mashiba T, Abe M, Hiasa Y, Matsuura B, Horiike N, Shoda T, Onji M: **Neuropsychiatric dysfunction in patients with chronic hepatitis and liver cirrhosis.** *Hepatol Res* 2008, **38**:1069–1075.
- Kato A, Tanaka H, Kawaguchi T, Kanazawa H, Iwasa M, Sakaida I, Moriwaki H, Murawaki Y, Suzuki K, Okita K: **Nutritional management contributes to improvement in minimal hepatic encephalopathy and quality of life in patients with liver cirrhosis: A preliminary, prospective, open-label study.** *Hepatol Res* 2013, **43**:425–458.
- Food and Nutrition Board, Institute of Medicine: *Dietary reference intakes, for energy, carbohydrate, fiber, fat, fatty acids, cholesterol, protein, and amino acids.* Washington D.C: National Academies Press; 2005.
- Ernst ND, Cleeman J, Mullis R, Sooter Bochenek J, Van Horn L: **The National Cholesterol Education Program: implications for dietetic practitioners**

- from the Adult Treatment Panel recommendations. *J Am Diet Assoc* 1998, **88**:1401–1408.
35. Bevilacqua S, Bonadonna R, Buzzigoli G, Boni C, Ciociaro D, Maccari F, Giorico MA, Ferrannini E: **Acute elevation of free fatty acid levels leads to hepatic insulin resistance in obese subjects.** *Metabolism* 1987, **36**:502–506.
 36. Boden G, Chen X, Ruiz J, White JV, Rossetti L: **Mechanisms of fatty acid-induced inhibition of glucose uptake.** *J Clin Invest* 1994, **93**:2438–2446.
 37. Lewis GF, Vranic M, Harley P, Giacca A: **Fatty acids mediate the acute extrahepatic effects of insulin on hepatic glucose production in humans.** *Diabetes* 1997, **46**:1111–1119.
 38. Rebrin K, Steil GM, Mittelman SD, Bergman RN: **Causal linkage between insulin suppression of lipolysis and suppression of liver glucose output in dogs.** *J Clin Invest* 1996, **98**:741–749.
 39. Sindelar DK, Chu CA, Rohlie M, Neal DW, Swift LL, Cherrington AD: **The role of fatty acids in mediating the effects of peripheral insulin on hepatic glucose production in the conscious dog.** *Diabetes* 1997, **46**:187–196.
 40. Wiesenthal SR, Sandhu H, McCall RH, Tchipashvili V, Yoshii H, Polonsky K, Shi ZQ, Lewis GF, Mari A, Giacca A: **Free fatty acids impair hepatic insulin extraction in vivo.** *Diabetes* 1999, **48**:766–774.
 41. Beigneux AP, Davies BS, Gin P, Weinstein MM, Farber E, Qiao X, Peale F, Bunting S, Walzem RL, Wong JS, Blaner WS, Ding ZM, Melford K, Wongsiriroj N, Shu X, de Sauvage F, Ryan RO, Fong LG, Bensadoun A, Young SG: **Glycosylphosphatidylinositol-anchored high-density lipoprotein-binding protein 1 plays a critical role in the lipolytic processing of chylomicrons.** *Cell Metab* 2007, **5**:279–291.
 42. Rodney R, Bell DR: *Medical physiology: principles for clinical medicine.* Riverwoods, IL, USA: Lippincott Williams & Wilkins; 2009.
 43. Glass C, Hipskind P, Tsien C, Malin SK, Kasumov T, Shah SN, Kirwan JP, Dasarath S: **Sarcopenia and a physiologically low respiratory quotient in patients with cirrhosis: a prospective controlled study.** *J Appl Physiol* 2013, **114**:559–565.
 44. Muller MJ: **Hepatic energy and substrate metabolism: a possible metabolic basis for early nutritional support in cirrhotic patients.** *Nutrition* 1998, **14**:30–38.
 45. Collins QF, Xiong Y, Lupo EG Jr, Liu HY, Cao W: **p38 Mitogen-activated protein kinase mediates free fatty acid-induced gluconeogenesis in hepatocytes.** *J Biol Chem* 2006, **281**:24336–24344.
 46. Plauth M, Cabre E, Campillo B, Kondrup J, Marchesini G, Schutz T, Shenkin A, Wendon J: **ESPEN Guidelines on Parenteral Nutrition: hepatology.** *Clin Nutr* 2009, **28**:436–444.
 47. Yamanaka Okumura H, Nakamura T, Takeuchi H, Miyake H, Katayama T, Arai H, Taketani Y, Fujii M, Shimada M, Takeda E: **Effect of late evening snack with rice ball on energy metabolism in liver cirrhosis.** *Eur J Clin Nutr* 2006, **60**:1067–1072.
 48. Kawaguchi T, Itou M, Taniguchi E, Sakata M, Abe M, Koga H, Oriishi T, Imamura Y, Kato T, Yamada K, Sata M: **Serum level of free fatty acids is associated with nocturnal hypoglycemia in cirrhotic patients with HCV infection: a pilot study.** *Hepatogastroenterology* 2011, **58**:103–108.

doi:10.1186/1475-2891-12-79

Cite this article as: Yamada *et al.*: Low fat intake is associated with pathological manifestations and poor recovery in patients with hepatocellular carcinoma. *Nutrition Journal* 2013 **12**:79.

Submit your next manuscript to BioMed Central and take full advantage of:

- Convenient online submission
- Thorough peer review
- No space constraints or color figure charges
- Immediate publication on acceptance
- Inclusion in PubMed, CAS, Scopus and Google Scholar
- Research which is freely available for redistribution

Submit your manuscript at
www.biomedcentral.com/submit

